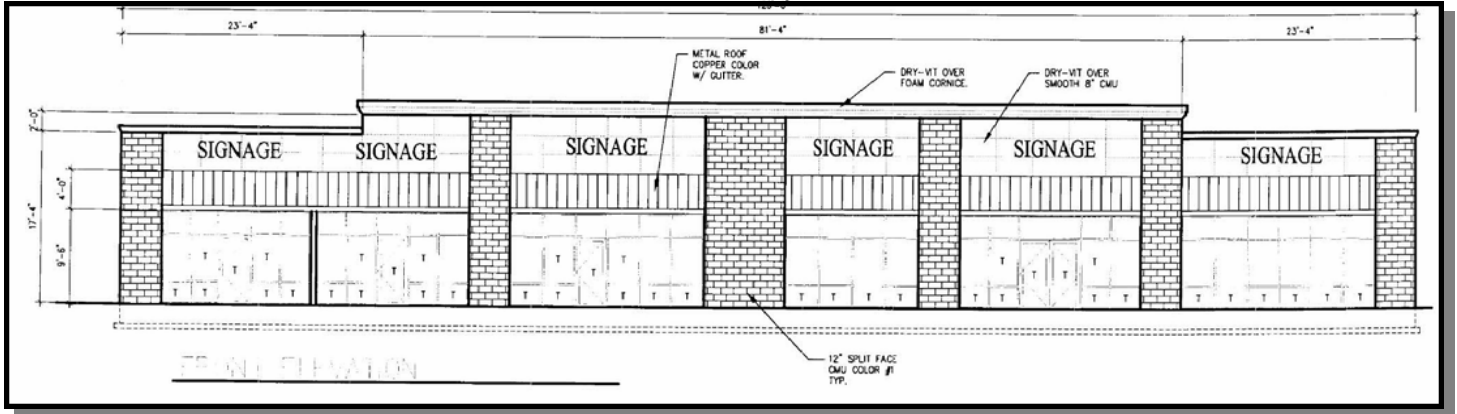


# McMinnville, Oregon

7,680 SF Retail Center



## CURRENT POPULATION

- 3 Mile 30,283
- 5 Mile 37,043
- 10 Mile 53,259

## AVERAGE HOUSEHOLD INCOME

- 5 Mile \$54,460

## DATE AVAILABLE

- Fall 2005

## LEASE RATE

- \$20.00 SF/NNN

- Join national tenants such as Check Into Cash and Dominoes in the best new retail location in McMinnville
- This new center is located on Highway 99W, the main arterial through downtown McMinnville
- Two end-cap spaces remaining
- This space will go fast!

635 NE Highway 99 W

CONTACT  
**Randy Baker**  
 (509) 455-3684 (o) (509) 954-5161  
 rbaker@bakerinvestmentgroup.com

